

Ras

Catalog Number: 21021

Gene Symbol: RAS

Description: Anti-Ras Rabbit Polyclonal Antibody

Background: Small GTPases are a super-family of cellular signaling regulators. Ras belongs to the Ras sub-family of GTPases that regulate cell proliferation, cell motility, and gene transcription. GTP binding increases the activity of Ras, and the hydrolysis of GTP to GDP renders it inactive. GTP hydrolysis is aided by GTPase activating proteins (GAPs), while exchange of GDP for GTP is facilitated by guanine nucleotide exchange factors (GEFs).

Immunogen: A synthetic peptide from the C-terminus of Ras

Tested applications: ELISA, WB, IHC

Recommended dilutions:

ELISA 1:100-1:5000

WB 1:100-1:2000

IHC 1:100-1:1000

Concentration: 0.2 mg/ml

Host: Rabbit

Clonality: Polyclonal

Purity: Purified from serum

Format: Liquid

Storage buffer:

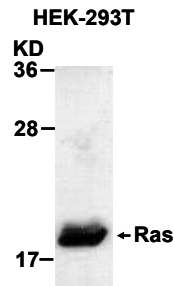
Preservative: no

Constituents: PBS (without Mg²⁺ and Ca²⁺), pH 7.4, 150 mM NaCl, 50% glycerol

Species Reactivity: Ras antibody recognizes H-Ras, N-Ras and K-Ras from vertebrates.

Storage Conditions: Store at -20°C. Avoid freeze / thaw cycles

Western blot:



HEK-293T whole-cell lysate was used for Western blot with anti-Ras polyclonal antibody (cat # 21021).

For research use only. Not for diagnostic or therapeutic applications.