

IDH2 (R172G)

Catalog Number: 26321

Gene Symbol: IDH2; D2HGA2; ICD-M; IDH; IDHM; IDP; IDPM; mNADP-IDH

Description: Anti-IDH2 (R172G) Mouse Monoclonal Antibody

Background: Isocitrate dehydrogenase (IDH) catalyze the oxidative decarboxylation of isocitrate to 2-oxoglutarate. The isocitrate and isopropylmalate dehydrogenases family has three members, IDH1, IDH2 and IDH3. IDH2 plays a role in intermediary metabolism and energy production. Defects in IDH2 are the cause of D-2-hydroxyglutaric aciduria type 2 (D2HGA2). Somatic mosaic mutations of this protein have also been found associated to Ollier disease and Maffucci syndrome, and R172G IDH2 mutations do exist in diffusely infiltrative gliomas.

Immunogen: A synthetic peptide from the internal region of IDH2 which includes the mutation of R172G, human origin.

Tested applications: ELISA, WB, IHC

Recommended dilutions:

ELISA: 1:1000-1:5000

WB: 1:100-1:1000

IHC: 1:50-1:100

Concentration: 1 mg/ml

Host: Mouse

Clonality: Monoclonal

Purity: Purified from ascites

Format: Liquid

Storage buffer:

Preservative: no

Constituents: PBS (without Mg²⁺ and Ca²⁺), pH 7.4, 150 mM NaCl, 50% glycerol

Species Reactivity: recognizes R172G mutant, but not wild-type IDH2 of vertebrates.

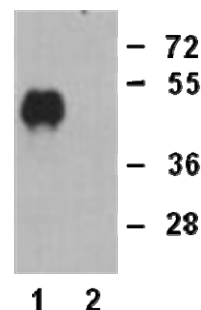
Storage Conditions: Store at -20°C. Avoid

freeze / thaw cycles.

Western blot:

IDH2 proteins

R172G WT

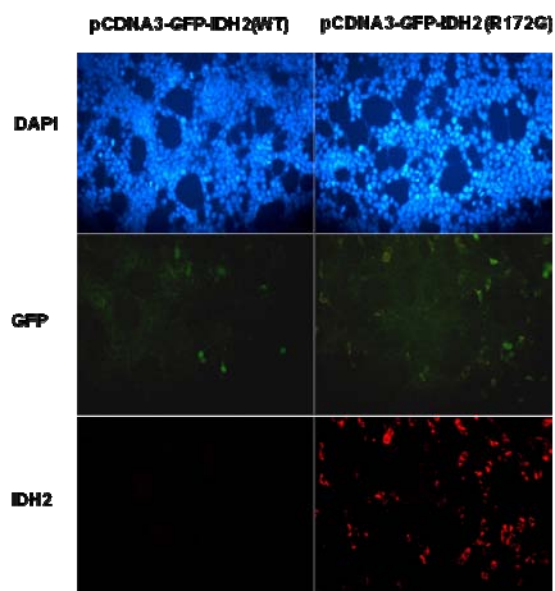


WB: Anti-IDH2(R172G) mAb

Western blot analysis of recombinant IDH2 (R172G) and wildtype proteins. Purified His-tagged IDH2 (R172G) (lane 1) and corresponding wild-type IDH2 protein (lane 2) were blotted with anti-IDH2 (R172G) monoclonal antibody (Cat. #26321).

For research use only. Not for diagnostic or therapeutic applications.

Immunofluorescence:



Immunofluorescence of cells expressing IDH2 proteins with anti-IDH2 (R172G) antibody.

HEK293T cells were transfected with pCDNA3-GFP-IDH2 (WT) plasmid (left column) or pCDNA3-GFP-IDH2 (R172G) plasmid (right column), then fixed and stained with anti-IDH2 (R172G) monoclonal antibody (Cat. #26321).

For research use only. Not for diagnostic or therapeutic applications.

24 Whitewoods Lane, Malvern, PA 19355 Tel: (610) 945-2007 FAX: (610) 945-2008
E-mail: sale@neweastbio.com Web: www.neweastbio.com