

## G $\alpha_i$

**Catalog Number:** 21006

**Gene Symbol:** Gnai

**Description:** Anti-G $\alpha_i$  Rabbit Polyclonal Antibody

**Background:** Heterotrimeric G proteins are critical cellular signal transducers. G $\alpha_i$  represents one sub-family of G proteins that could mediate the inhibition of adenylyl cyclases. Other biochemical and physiological functions of G $\alpha_i$  proteins are being explored.

**Immunogen:** Recombinant full length protein of G $\alpha_{i1}$

**Tested applications:** ELISA, WB, IHC

**Recommended dilutions:**

ELISA 1:100-1:5000,

WB 1:100-1:2000,

**Concentration:** 1 mg/ml

**Host:** Rabbit

**Clonality:** Polyclonal

**Purity:** Purified from serum

**Format:** Liquid

**Storage buffer:**

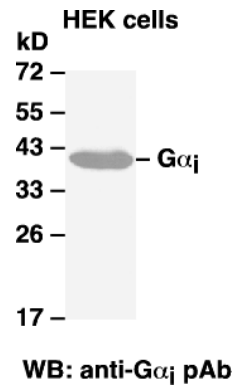
Preservative: no

Constituents: PBS (without Mg<sup>2+</sup> and Ca<sup>2+</sup>), pH 7.4, 150 mM NaCl, 50% glycerol

**Species Reactivity:** G $\alpha_i$  antibody recognizes G $\alpha_{i1}$ , G $\alpha_{i2}$ , and G $\alpha_{i3}$  of vertebrates.

**Storage Conditions:** Store at -20°C. Avoid freeze / thaw cycles

### Western blot:



Western blot analysis of G $\alpha_i$  proteins. G $\alpha_{i1}$  plasmid DNA was transiently transfected into HEK-293 cells. Whole-cell lysate was used for western blot with the polyclonal anti- G $\alpha_i$  antibody (cat # 21006).

For research use only. Not for diagnostic or therapeutic applications.