

## MUC1

**Catalog Number:** 21123

**Gene Symbol:** MUC1

**Description:** Anti- MUC1 Rabbit Polyclonal Antibody

**Background:** Mucin-1 proteins line the apical surface of highly polarized epithelial cells in the lungs, stomach, intestines, and eyes. Mucins protect the body from infection by pathogen binding to oligosaccharides in the extracellular domain. Overexpression of MUC1 is often associated with colon, breast, ovarian, lung, and pancreatic cancers.

**Immunogen:** A synthetic peptide from the internal region of MUC1 of human origin.

**Tested applications:** ELISA, WB, IHC, IP

**Recommended dilutions:**

ELISA: 1:1000-1:5000

WB: 1:100-1:1000

IHC: 1:50-1:100

**Concentration:** 1 mg/ml

**Host:** Rabbit

**Clonality:** Polyclonal

**Purity:** Purified from serum

**Format:** Liquid

**Storage buffer:**

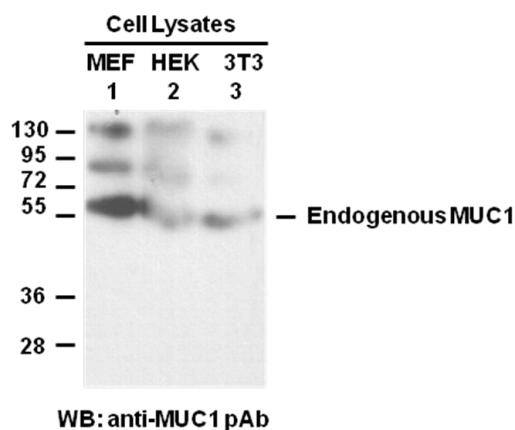
Preservative: no

Constituents: PBS (without Mg<sup>2+</sup> and Ca<sup>2+</sup>), pH 7.4, 150 mM NaCl, 50% glycerol

**Species Reactivity:** Anti-MUC1 antibody recognizes MUC1 of vertebrates.

**Storage Conditions:** Store at -20°C. Avoid freeze / thaw cycles

### Western blot:



Whole-cell lysates of MEF (lane 1), HEK293 (lane 2) and NIH3T3 (lane 3) cells were used for western blot with the polyclonal anti-MUC1 antibody (Cat # 21123).

For research use only. Not for diagnostic or therapeutic applications.

24 Whitewoods Lane, Malvern, PA 19355

E-mail: [sale@neweastbio.com](mailto:sale@neweastbio.com)

Tel: (610) 945-2007 FAX: (610) 945-2008

Web: [www.neweastbio.com](http://www.neweastbio.com)