

## Arf1

**Catalog Number:** 26019

**Gene Symbol:** ARF1

**Description:** Anti-Arf1 Mouse Monoclonal Antibody

**Background:** ARF1 (ADP-ribosylation factor 1) is a member of the ARF super-family. ARF genes encode small GTPases that increase the ADP-ribosyltransferase activity of cholera toxin and are critical for vesicular trafficking as activators of phospholipase D. ARF1 protein is localized to the Golgi apparatus and has a central role in intra-Golgi transport.

**Immunogen:** Recombinant full length protein of Arf1.

**Tested applications:** ELISA, WB, IHC, IP

**Recommended dilutions:**

ELISA 1:100-1:5000

WB 1:100-1:2000

IHC 1:50-1:100

**Concentration:** 1 mg/ml

**Host:** mouse

**Clonality:** Monoclonal

**Isotype:** IgG

**Purity:** Purified from ascites

**Format:** Liquid

**Storage buffer:**

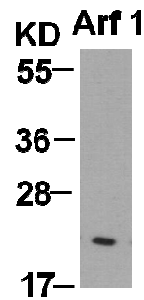
Preservative: no

Constituents: PBS (without Mg<sup>2+</sup> and Ca<sup>2+</sup>), pH 7.4, 150 mM NaCl, 50% glycerol

**Species Reactivity:** Arf1 antibody recognizes Arf1 (maybe Arf2 and Arf3) of vertebrates.

**Storage Conditions:** Store at -20°C. Avoid freeze / thaw cycles

**Western blot:**



**WB: anti-Arf1 mAb**

Western blot analysis of Arf1 proteins.

**For research use only. Not for diagnostic or therapeutic applications.**