

## GRB7

**Catalog Number:** 26133

**Gene Symbol:** GRB7

**Description:** anti-GRB7 Mouse Monoclonal Antibody

**Background:** Grb7 is an adaptor protein that interacts with epidermal growth factor receptor (EGFR) and ephrin receptors. It plays a role in the integrin signaling pathway and cell migration by binding with focal adhesion kinase (FAK). Grb7 gene is commonly co-amplified (present in excess copies) in breast cancers. Grb7 is over-expressed in testicular germ cell tumors, esophageal cancers, and gastric cancers. There are clues that it involved in cell migration and metastatic progression of human esophageal carcinomas.

**Immunogen:** Purified GRB7 protein, human origin.

**Tested applications:** ELISA, WB, IHC

**Recommended dilutions:**

ELISA: 1:1000-1:5000

WB: 1:100-1:1000

IHC: 1:50-1:200

**Concentration:** 0.5mg/ml

**Host:** Mouse

**Clonality:** Monoclonal

**Purity:** Purified from ascites

**Format:** Liquid

**Storage buffer:**

Preservative: no

Constituents: PBS (without Mg<sup>2+</sup> and Ca<sup>2+</sup>), pH

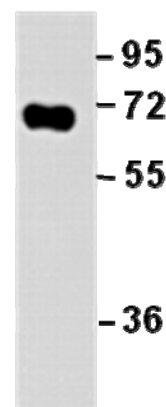
7.4, 150 mM NaCl, 50% glycerol

**Species Reactivity:** Recognizes GRB7 of vertebrates.

**Storage Conditions:** Store at -20°C. Avoid freeze / thaw cycles

### Western blot:

#### GRB7 protein



#### WB: Anti-GRB7 mAb

**Western blot analysis of recombinant GRB7 protein.** Purified His-tagged GRB7 protein was blotted with anti-GRB7 mouse monoclonal antibody (Cat. #26133).

For research use only. Not for diagnostic or therapeutic applications.

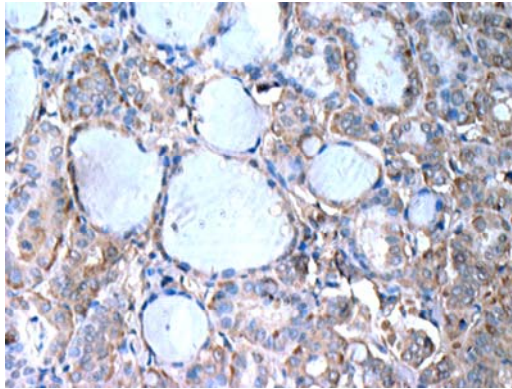
24 Whitewoods Lane, Malvern, PA 19355

E-mail: [sale@neweastbio.com](mailto:sale@neweastbio.com)

Tel: (610) 945-2007 FAX: (610) 945-2008

Web: [www.neweastbio.com](http://www.neweastbio.com)

### **Immunohistochemistry:**



Immunohistochemical analysis of paraffin-embedded human breast cancer tissue with anti-GRB7 monoclonal antibody (Cat. #26133). Tissue samples were fixed with formaldehyde and blocked with 1% serum for 15 min at 37 °C. Antigen retrieval was by heat mediation in citrate buffer (pH6). Samples were then incubated with primary antibody (1:50 dilution) overnight at 4°C. A HRP-conjugated Goat anti-mouse IgG (1:50 dilution) was used as secondary antibody.