

Fascin

Catalog Number: 26013

Gene Symbol: FSCN1

Description: Anti-Fascin Mouse Monoclonal Antibody

Background: Fascin is an ~58 kDa monomeric actin filament bundling protein. It is required to maximally cross-link the actin filaments into straight, compact, and rigid bundles, and contributes to the formation of filopodia that are critical for cell migration. Elevated levels of fascin have been found in metastatic tumors and are correlated with clinically aggressive phenotypes, poor prognosis, and shorter survival.

Immunogen: A peptide from the middle of human Fascin 1

Tested applications: ELISA, WB, IP, IHC

Recommended dilutions:

ELISA: 1:1000-1:5000

WB: 1:100-1:2000

IP: 1 µg for 1~2 mg total cellular proteins

IHC: 1:100 dilution

Concentration: 1 mg/ml

Host: mouse

Clonality: Monoclonal

Isotype: IgG

Purity: Purified from ascites

Format: Liquid

Storage buffer:

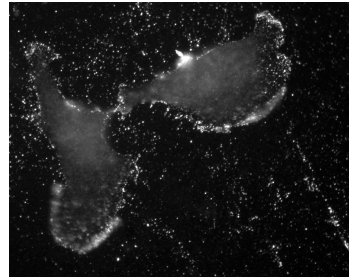
Preservative: no

Constituents: PBS (without Mg²⁺ and Ca²⁺), pH

7.4, 150 mM NaCl, 50% glycerol

Species Reactivity: Anti-fascin antibody recognizes fascin 1, 2 and 3 of vertebrates.

Storage Conditions: Store at -20°C. Avoid freeze / thaw cycles



Detection of fascin by immunofluorescence in 4T1 mouse breast tumor cells with antifascin monoclonal antibody (Cat # 26013).

For research use only. Not for diagnostic or therapeutic applications.

24 Whitewoods Lane, Malvern, PA 19355

E-mail: sale@neweastbio.com

Tel: (610) 945-2007 FAX: (610) 945-2008

Web: www.neweastbio.com