

## Fascin

**Catalog Number:** 26012

**Gene Symbol:** FSCN1

**Description:** Anti-Fascin Mouse Monoclonal Antibody

**Background:** Fascin is an ~58 kDa monomeric actin filament bundling protein. It is required to maximally cross-link the actin filaments into straight, compact, and rigid bundles, and contributes to the formation of filopodia that are critical for cell migration. Elevated levels of fascin have been found in metastatic tumors and are correlated with clinically aggressive phenotypes, poor prognosis, and shorter survival.

**Immunogen:** A peptide from the N-terminal of human Fascin 1

**Tested applications:** ELISA, WB, IP, IHC

**Recommended dilutions:**

ELISA: 1:1000-1:5000

WB: 1:100-1:2000

IP: 1 µg for 1~2 mg total cellular proteins

IHC: 1:100 dilution

**Concentration:** 1 mg/ml

**Host:** mouse

**Clonality:** Monoclonal

**Isotype:** IgG

**Purity:** Purified from ascites

**Format:** Liquid

**Storage buffer:**

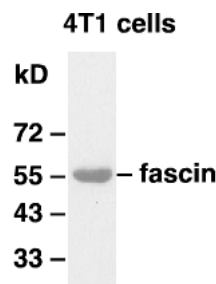
Preservative: no

Constituents: PBS (without Mg<sup>2+</sup> and Ca<sup>2+</sup>), pH 7.4, 150 mM NaCl, 50% glycerol

**Species Reactivity:** Anti-fascin antibody recognizes fascin 1, 2 and 3 of vertebrates.

**Storage Conditions:** Store at -20°C. Avoid freeze / thaw cycles

### Western blot:



### WB: anti-fascin mAb

Western blot analysis of fascin proteins.

Whole-cell lysate of 4T1 mouse breast tumor cells was used for western blots with the monoclonal anti-fascin antibody (Cat # 26012).

For research use only. Not for diagnostic or therapeutic applications.

24 Whitewoods Lane, Malvern, PA 19355

E-mail: [sale@neweastbio.com](mailto:sale@neweastbio.com)

Tel: (610) 945-2007 FAX: (610) 945-2008

Web: [www.neweastbio.com](http://www.neweastbio.com)