

Vimentin

Catalog Number: 26091

Gene Symbol: VIM

Description: Anti-Vimentin Mouse Monoclonal Antibody

Background: Vimentin belongs to the intermediate filament family. Vimentins are class-III intermediate filaments found in various non-epithelial cells, especially mesenchymal cells. It is highly expressed in fibroblasts and expressed in many hormone-independent mammary carcinoma cell lines, has some expression in T- and B-lymphocytes and little or no expression in Burkitt's lymphoma cell lines.

Immunogen: Purified vimentin protein, human origin

Tested applications: ELISA, WB, IHC

Recommended dilutions:

ELISA: 1:1000-1:5000

WB: 1:1000-1:2000

IHC: 1:50-1:200

Concentration: 1mg/ml

Host: Mouse

Clonality: Monoclonal

Purity: Purified from ascites

Format: Liquid

Storage buffer:

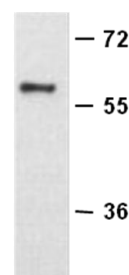
Preservative: no

Constituents: PBS (without Mg²⁺ and Ca²⁺), pH 7.4, 150 mM NaCl, 50% glycerol

Species Reactivity: Recognizes vimentin of vertebrates.

Storage Conditions: Store at -20°C. Avoid freeze / thaw cycles

Western blot:

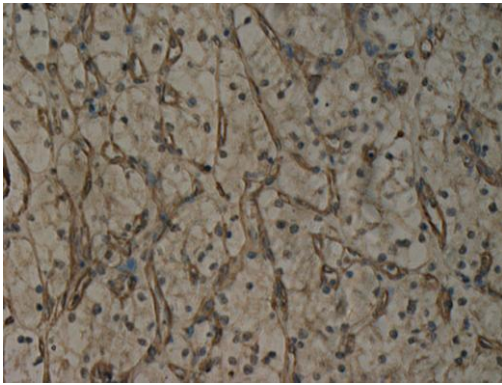


WB:Anti-Vimentin mAb

Western blot analysis of recombinant vimentin protein. Purified His-tagged vimentin protein (Cat. #10190) was blotted with anti-vimentin monoclonal antibody (Cat. # 26091).

For research use only. Not for diagnostic or therapeutic applications.

Immunohistochemistry:



Immunohistochemical analysis of paraffin-embedded human renal cancer tissue with anti-vimentin monoclonal antibody (Cat. #26091). Tissue samples were fixed with formaldehyde and blocked with 1% serum for 15 min at 37 °C. Antigen retrieval was by heat mediation in citrate buffer (pH6). Samples were then incubated with primary antibody (1:100 dilution) overnight at 4°C. A HRP-conjugated Goat anti-mouse IgG (1:50 dilution) was used as secondary antibody.