

EGFR (S768I)

Catalog Number: 26483

Gene Symbol: EGFR/HER1/ERBB1

Description: Anti-EGFR (S768I) Mouse Monoclonal Antibody

Background: EGFR is a receptor tyrosine kinase binding ligands of the EGF family and activating several signaling cascades to convert extracellular cues into appropriate cellular responses. It activates at least 4 major downstream signaling cascades including the RAS-RAF-MEK-ERK, PI3 kinase-AKT, PLCgamma-PKC and STATs modules. Defects in EGFR are associated with lung cancer (LNCR).

Immunogen: A synthetic peptide from the internal region of EGFR which includes the mutation of S768I, human origin.

Tested applications: ELISA, WB, IF, IHC

Recommended dilutions:

ELISA: 1:1000-1:5000

WB: 1:1000-1:5000

IHC: 1:50-1:200

Concentration: 1 mg/ml

Host: Mouse

Clonality: Monoclonal

Purity: Purified from ascites

Format: Liquid

Storage buffer:

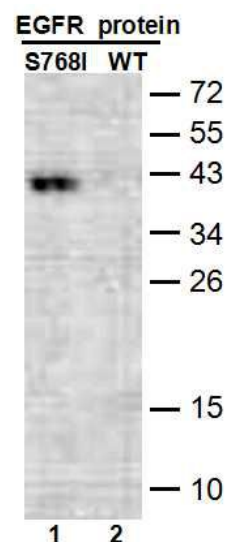
Preservative: no

Constituents: PBS (without Mg²⁺ and Ca²⁺), pH 7.4, 150 mM NaCl, 50% glycerol

Species Reactivity: recognizes EGFR (S768I), but not wild type EGFR from vertebrates.

Storage Conditions: Store at -20°C. Avoid freeze / thaw cycles.

Western blot:

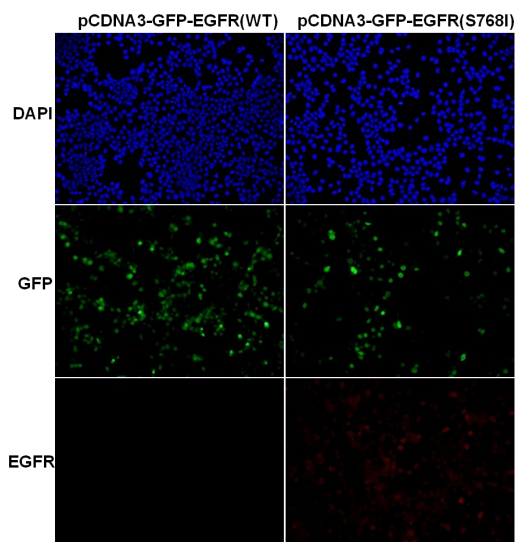


WB: anti-EGFR (S768I) mAb

Western blot analysis of recombinant EGFR (S768I) and wildtype proteins. Purified His-tagged EGFR (S768I) protein (lane 1) and corresponding wild type protein (amino acids 702-987, lane 2) were blotted with anti-EGFR (S768I) mouse monoclonal antibody (Cat. #26483).

For research use only. Not for diagnostic or therapeutic applications.

Immunofluorescence:



Immunofluorescence of cells expressing EGFR proteins with anti-EGFR (S768I) antibody.

HEK293T cells were transfected with pCDNA3-GFP-EGFR (WT) plasmid (left column) or pCDNA3-GFP-EGFR (S768I) plasmid (right column), then fixed and stained with anti-EGFR (S768I) monoclonal antibody (Cat. #26483).

For research use only. Not for diagnostic or therapeutic applications.

24 Whitewoods Lane, Malvern, PA 19355 Tel: (610) 945-2007 FAX: (610) 945-2008
E-mail: sale@neweastbio.com