

AKT1

Catalog Number: 21274

Gene Symbol: AKT1, AKT, PKB, PKB-ALPHA, PRKBA, RAC, RAC-ALPHA

Description: Anti-AKT1 Rabbit Polyclonal Antibody

Background: AKT1 is one of 3 closely related serine/threonine-protein kinases (AKT1, AKT2 and AKT3) called the AKT kinase, and which regulate many processes including metabolism, proliferation, cell survival, growth and angiogenesis. Its function is mediated through serine and/or threonine phosphorylation of a range of downstream substrates. There are evidences that mutation or abnormal expression in AKT1 is associated with cancers.

Immunogen: Purified AKT1 protein, human origin.

Tested applications: ELISA, WB, IHC

Recommended dilutions:

ELISA: 1:1000-1:5000

WB: 1:100-1:1000

IHC: 1:50-1:200

Concentration: 0.2mg/ml

Host:Rabbit

Clonality: Polyclonal

Purity: Purified from serum

Format: Liquid

Storage buffer:

Preservative: no

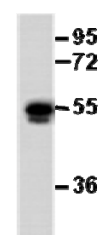
Constituents: PBS (without Mg²⁺ and Ca²⁺), pH 7.4, 150 mM NaCl, 50% glycerol

Species Reactivity: Recognizes AKT1 of vertebrates.

Storage Conditions: Store at -20°C. Avoid freeze / thaw cycles

Western blot:

AKT1 protein

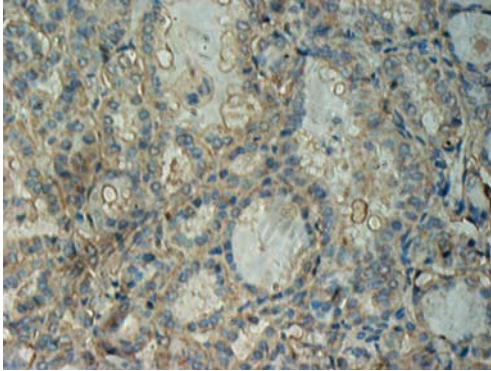


WB: Anti-AKT1 pAb

Western blot analysis of recombinant AKT1 protein. Purified His-tagged AKT1 protein was blotted with anti-AKT1 rabbit polyclonal antibody (Cat. #21274).

For research use only. Not for diagnostic or therapeutic applications.

Immunohistochemistry:



Immunohistochemical analysis of paraffin-embedded human thyroid cancer tissue with anti-AKT1 polyclonal antibody (Cat. #21274). Tissue samples were fixed with formaldehyde and blocked with 1% serum for 15 min at 37 °C. Antigen retrieval was by heat mediation in citrate buffer (pH6). Samples were then incubated with primary antibody (1:50 dilution) overnight at 4°C. A HRP-conjugated Goat anti-mouse IgG (1:50 dilution) was used as secondary antibody.